

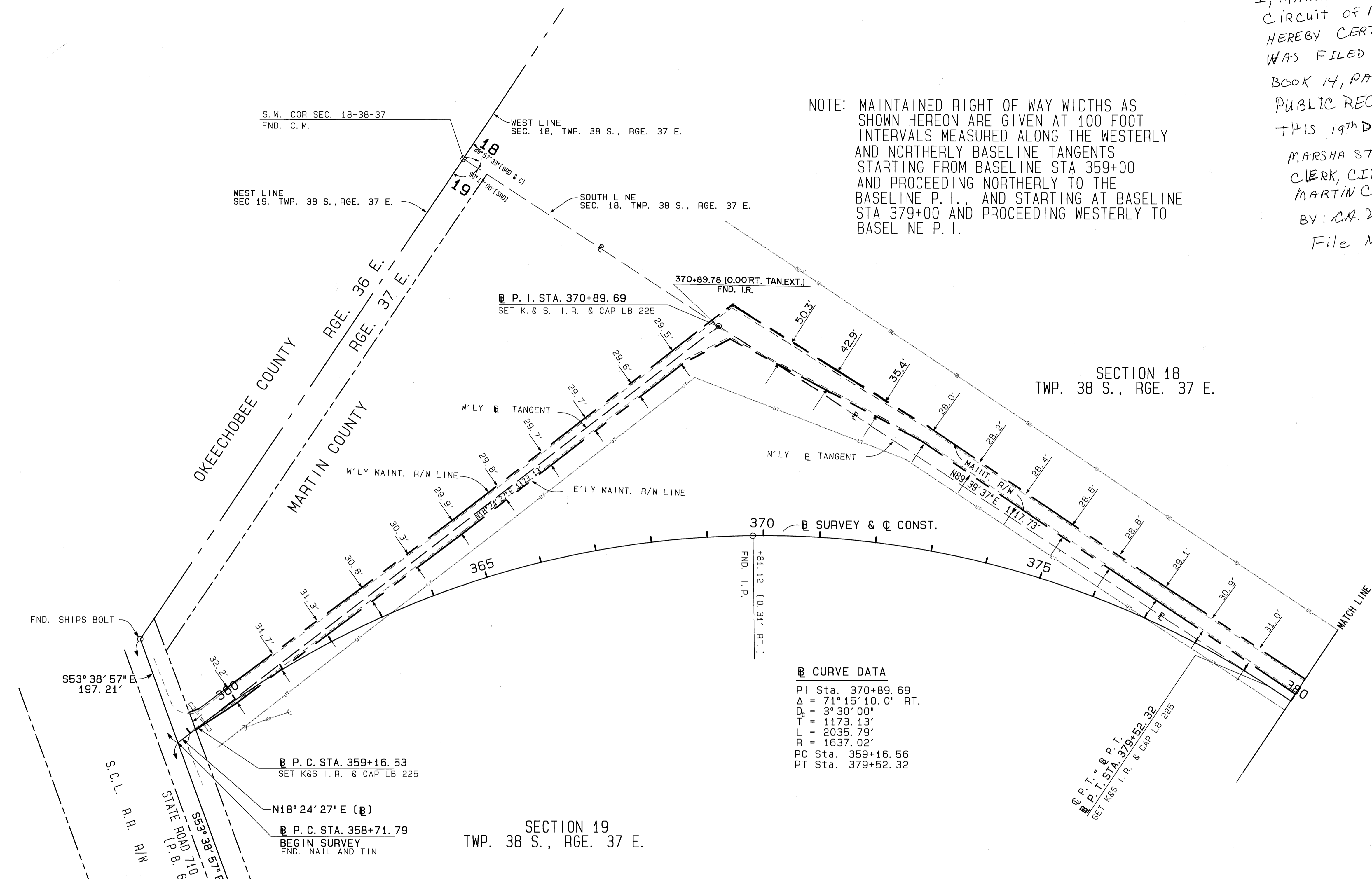
I, MARSHA STILLER CLERK OF THE CIRCUIT OF MARTIN COUNTY FLORIDA HEREBY CERTIFY THAT THIS PLAT WAS FILED FOR RECORD IN PLAT BOOK 14, PAGE 41 MARTIN COUNTY PUBLIC RECORDS.
THIS 19TH DAY OF DEC. 1997

MARSHA STILLER
CLERK, CIRCUIT COURT
MARTIN COUNTY, FLORIDA
BY: CA. Sierra, D.C.
File NO. 1270462



NOTE: MAINTAINED RIGHT OF WAY WIDTHS AS SHOWN HEREON ARE GIVEN AT 100 FOOT INTERVALS MEASURED ALONG THE WESTERLY AND NORTHERLY BASELINE TANGENTS STARTING FROM BASELINE STA 359+00 AND PROCEEDING NORTHERLY TO THE BASELINE P. I., AND STARTING AT BASELINE STA 379+00 AND PROCEEDING WESTERLY TO BASELINE P. I.

7 DEC 19 97 10:50
MARSHA STILLER
CLERK OF CIRCUIT COURT
BY D.C.



② CURVE DATA
 P.I. Sta. 370+89.69
 $\Delta = 71^{\circ} 15' 10.0''$ RT.
 $D_c = 3^{\circ} 30' 00''$
 $T = 1173.13'$
 $L = 2035.79'$
 $R = 1637.02'$
 PC Sta. 359+16.56
 PT Sta. 379+52.32

SECTION 19
TWP. 38 S., RGE. 37 E.

WESTERLY MAINTAINED R/W LINE			
STATION	OFFSET	BEARING	DIST.
359+21.18	30.99	LEFT	N 35-43-10.1 E 19.51'
359+39.54	25.34	LEFT	N 19-17-29.6 E 59.78'
359+98.38	26.34	LEFT	N 19-23-22.1 E 500.07'
364+71.81	115.55	LEFT	N 18-28-22.0 E 499.95'
368+66.39	338.49	LEFT	N 19-01-54.0 E 134.31'
369+56.72	414.02	LEFT	N 88-28-25.0 E 408.26'
372+58.19	219.13	LEFT	S 89-31-40.3 E 500.49'
376+98.59	68.10	LEFT	N 89-57-01.4 E 310.71'
379+99.77	46.09	LEFT	

EASTERLY MAINTAINED R/W LINE			
STATION	OFFSET	BEARING	DIST.
359+11.29	.92	RIGHT	N 22-57-26.1 E 88.57'
359+99.91	5.83	RIGHT	N 19-07-33.4 E 500.07'
364+81.20	87.36	LEFT	N 18-25-37.2 E 500.00'
368+79.56	313.63	LEFT	N 28-30-20.0 E 92.04'
369+48.98	352.28	LEFT	N 84-11-01.0 E 383.15'
372+48.11	193.52	LEFT	S 89-38-19.0 E 500.04'
376+94.12	39.47	LEFT	S 89-40-50.9 E 310.71'
379+99.69	15.09	LEFT	

SPECIFIC PURPOSE SURVEY
MARTIN GRADE (C. R. 714)

MARTIN COUNTY			
ENGINEERING / RIGHT OF WAY DIVISION			
MAINTENANCE MAP			
C. R. 714		MARTIN COUNTY, FLORIDA	
DRAWN	BY	DATE	APPROVED BY: DATE
TRACED			
CHECKED			
MAPS PREPARED BY:		FIELD BOOK NOS.	
		90-14, 90-08, 90-18, 90-19, 90-20	
SCALE			
SECTION		SHEET 4 OF 11	

REVISION	BY	DATE